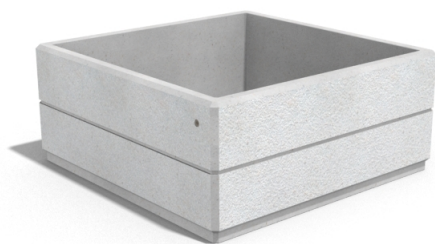
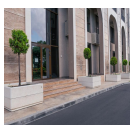


Creating Brands of the Future



SQUARE CONCRETE PLANTER 96 exposed aggregate

1,192.00 €

Model from the series of square flower pots and planters by Encho Enchev - ETE made out of high-performance concrete and natural aggregate. The concrete is reinforced and fiber strengthened. The aggregate is made of natural marble or granite stones with specific sizes and the possibility of different color combinations. The surfaces are embossed and treated with a special protective coating. With its size and shape, the concrete planter offers the opportunity to decorate various urban spaces as well as private properties and gardens. The natural colors of the aggregate are perfectly combined with various plant compositions.

Diameter: 150.0 cm

Length: 150.0 cm

Height: 65.0 cm

Stainless Steel

81 AISI 304

Stainless Steel

81 AISI 304

Natural Marble aggregates

42 Brown

51 White

52 Scatter

53 Grey



AR / VR



WEBSITE