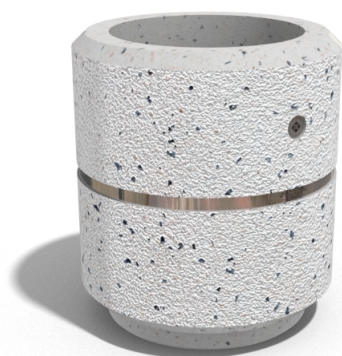
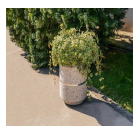


Creating Brands of the Future



ROUND CONCRETE PLANTER 20 exposed aggregate

186.00 €

Model from the series of round concrete planters by Encho Enchev-ETE, in which the designers have offered a great ratio between height and diameter, turning every park, square or alley into a masterpiece of art. The flowerpot is made out of high-performance concrete and natural embossed aggregate. The aggregate structure is composed of natural marble or granite stones with specific dimensions. The surface is treated with special protective coating. It reduces the deposition of contaminants and further increases the resistance of the product to aggressive weather conditions.

The concrete is reinforced and fiber strengthened. The decoration with a mirror chrome-nickel strip and the possibilities for different color variations of the aggregate structure give individuality and style. The classic round shape of the planter makes it suitable for a wide range of ornamental plants. A beautiful addition to the design of exterior spaces in parks, gardens and private properties.

Diameter: 40.0 cm

Length: 40.0 cm

Height: 45.0 cm

Stainless Steel

81 AISI 304

Stainless Steel

81 AISI 304

Natural Marble aggregates

42 Brown

51 White

52 Scatter

53 Grey





AR/VR



WEBSITE

