

Creating Brands of the Future



Concrete Benches 268 V ER Resysta, exposed aggregate

1,393.00 €

This stylish and modern bench is the ideal choice for urban environments, elegantly blending a curved design with a sophisticated relief texture. It is crafted from high-strength concrete with a homogeneous aggregate structure of natural marble or granite particles of a defined size. The model is equipped with a luxurious wooden seat and offers a choice between traditional spruce and our innovative material - eco-friendly wood Resysta®. This revolutionary product, made in Germany, is 100% recyclable and environmentally friendly, offering a *15-year warranty* against cracking and delamination (provided by the manufacturer). Incorporating such a material not only enhances the bench's value but also introduces a well-deserved "green" dimension to your urban spaces. The wood elements and concrete surface are treated with protective coatings, ensuring additional resilience against atmospheric influences. Thanks to the bench's curved design, a circle with an external diameter of 4 meters can be described when combining 6 modules of the same type or with the other curved modules from the 268 series. Combining the concrete bench model 268-Y with the other elements of the modular bench model 268 allows landscape architects to design unique and cozy relaxation and entertainment spaces, ensuring comfort and functionality tailored to individual tastes.

Diameter: 210.0 cm

Length: 78.0 cm

Height: 45.0 cm

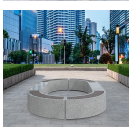
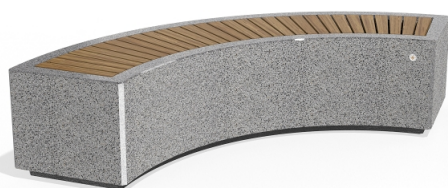
Steel

RAL 7024 matt

Stainless Steel

81 AISI 304

Natural Marble aggregates



Wood Timber

Eco wood



AR/VR



WEBSITE

